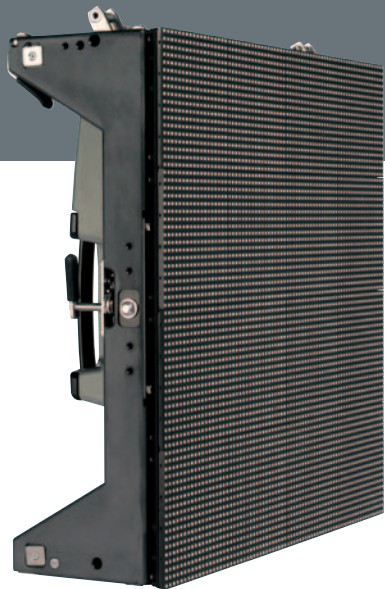


ILite 6 XP



Indoor LED display solution

The ILite 6 XP is Barco's latest addition to its indoor LED display product range. With its 6mm resolution, 14-bit processing power, level 2 (LED level) calibration, and enhanced software algorithms, the I6 XP delivers unbeatable light output, unsurpassed color depth and uniformity - while still remaining fully cross-rentable. The ILite 6 XP is also fully backwards compatible with previous models of ILite 6 tiles.

Incorporating Barco's proprietary System Color Signature™ technology, each individual LED's color and brightness characteristics are robotically measured at the factory. This technology allows you to mix and match tiles of different batches and various run-time ages to obtain a seamless display with a perfect image every single time.

The 14-bit processing power also results in significantly improved grey-scales, especially in low light conditions.

The ILite 6 XP is source compatible with the full range of sources including HDSDI, enabling you to deliver full native, non-compressed HD content (such as 720p, 1080i, 1080p).

BARCO

Visibly yours

ILite 6 XP specifications

· Pixel pitch	6 mm
· Brightness	2500 NIT
(Display calibrated at 6500°K)	2000 NIT
· LED configuration	3-in-1 SMD
· Pixel density	25.920/m ² (2410/ft ²) 5.184/tile (72x72)
· Viewing angle (min. 50% brightness)	
· Horizontal	145° +
· Vertical	145° +
· Contrast ratio	950:1
· Lifetime (full white - half brightness)	45 000 h
· Power consumption / tile	
· maximum	400 W
· average	100 W
· Weight / tile (including structure)	13 Kg (28,7 lbs)
· Processing (Color)	14 bit/color
· Processing (Greyscale)	8 bit/color
· Colors	4,4 trillion
· Refresh rate (PAL/NTSC) minimum	400 Hz
· Temperature	
· operating	0 - 40°C (32 - 104°F)
· storage	-20 - 60°C (-4 - 140°F)
· Humidity	
· operating	35 - 85%
· storage	10 - 90%
· Source compatibility	S-Video - Composite - YUV - RGB - SDI - HDSDI - Data DVI up to SXGA
· Certification	UL - CE - TUV Class A
· Ordering information	R9010250
· Dimensions	

149,5 mm (5.89")



448 mm (17.6")



448 mm (17.6")

Ref. no. R599764 - March '04

Barco Projection Systems is an ISO 9001 registered company.
The information and data given are typical of the equipment described. However any individual item is subject to change without notice.

Barco
Noordlaan 5, 8520 Kuurne - Belgium
Tel. +32 56 36 89 70 - Fax + 32 56 36 88 24

email: sales.events@barco.com

BARCO

Visibly yours